



# MCT GROUP

Concrete batching plants for precast  
Concrete batching plants for ready mix  
Modular batching plants  
Mobile batching plants  
Flying buckets for concrete transport  
Casting machines  
Recycling systems  
Heating and Cooling systems  
Moisture and plasticity control  
Automation and control systems  
for concrete batching plants





# MCT GROUP

## BATCHING PLANTS



Marcantonini batching plants are specially built for industrial concrete precast factories and for readymix producers.

Our aim is to produce equipment that your company will be proud to own.

With our years of experience and technical know how, we can offer a product that will allow your business to develop to the highest level.

Innovation is our challenge and we do our best in supporting our customers and a healthy environment.

Marcantonini is able to provide customized solutions for both horizontal and tower type batching plants.

Our current range of plants is the culmination of 45 years experience by the Marcantonini Technical Staff in the design of concrete batching, casting and transporting equipment.





# MCT GROUP

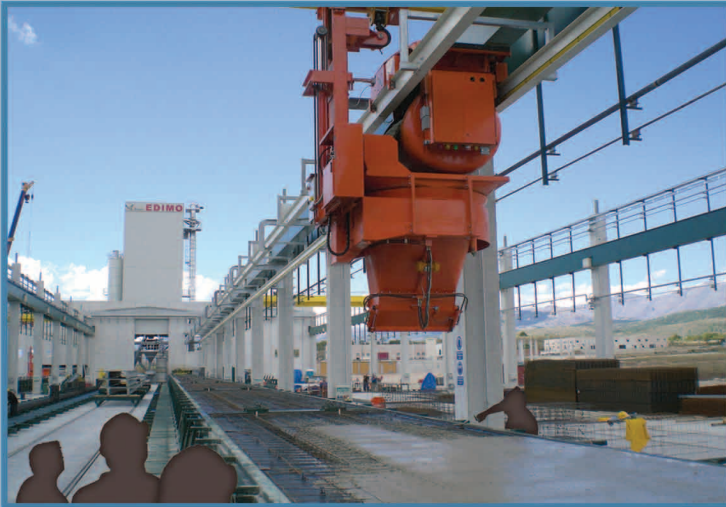
## CONCRETE DISTRIBUTION



The Marcantonini concrete distribution system is the result of years of dedicated effort by our engineers to achieve maximum functionality, efficiency and reliability in the rapid transport of concrete. Marcantonini Flying Buckets can transport both wet and dry concrete in a fast (from 60 m/min to 240m/min) yet controlled way so that concrete arrives at its destination swiftly without changing any of its characteristics.

The state of the art wi-fi control system synchronizes the Flying Buckets with the batching plant and other casting machines and allows the batch plant operator to oversee the position and status of the bucket.

The casting machine is designed to feed concrete from concrete delivery buckets to any kind of mould, it can be moved using a fail safe remote control unit along the mould and up or down from 1 to 5 meters, it can also rotate 90° or 180°.





## MODULAR AND MOBILE PLANTS



These compact, modular batching plants are easy to install and are ready for full production in a matter of hours. Each plant is either trailer mounted or containerised for transportation by road, rail or sea. Assembly is easy, complete installation and commissioning can be carried out in a maximum time of 2 days due to the unique design which negates the need for foundations or complex civil works.

